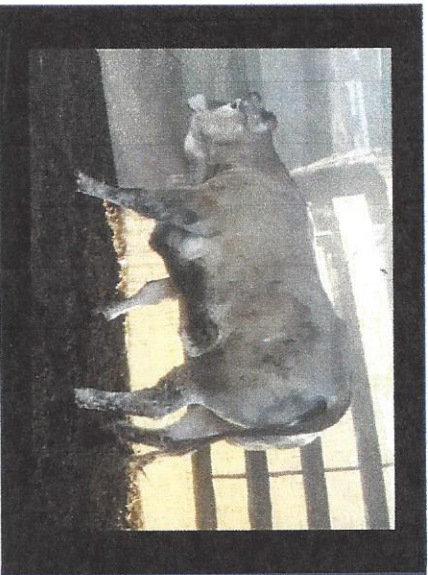
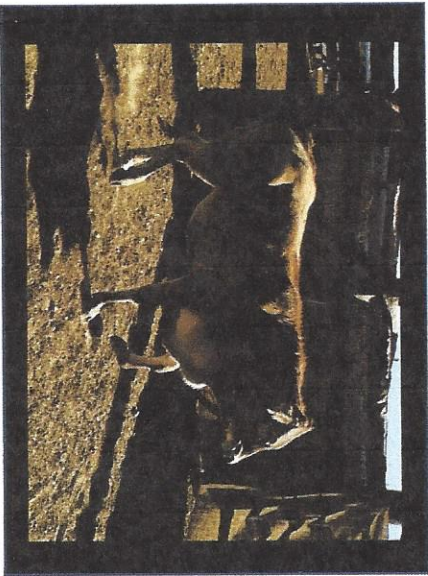


Butcher Pastoral Co

ENTRY TO FEEDLOT



COMPLETION

ENTRY 18

HEIFER

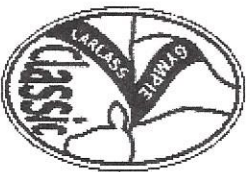


17 Butcher Pastoral Company



VALUES WEIGHT GAINS

FTE/HEIF	<i>STEER</i>	F
BREED		Bazadais X
ARRIVAL WEIGHT - KG		293
VALUE - CENTS/KG		325
INITIAL VALUE of ANIMAL - \$		\$939.25
FINAL VALUE - \$		\$1,334.00
GAIN IN VALUE - \$		\$394.75
CHANGE IN VALUE - %		42.03
FEEDING COST - \$		\$450.00
NET GAIN - \$		-\$55.25
INITIAL FEEDLOT WEIGHT - KG		289
WEIGHT AT 82 DAYS - KG		427
TOTAL WEIGHT GAIN - KG		138
WEIGHT GAIN % OF INIT. WEIGHT		47.75
AVG WEIGHT GAIN - KG/DAY AT 82 DAYS		1.683
AVG % WT GAIN & TOT KG GAIN (SCALED)		44.906
CHARLIE COTTER ALLROUNDER		237.772



EPBI				
LIVE WEIGHT			427.00	%
HOT STANDARD CARCASS WEIGHT			266.80	kg
<i>(15 point deduction for under 200kg)</i>				
Yield Factors				
MUSCLE SCORE	C+	A-E	6.00	10pt
1.1 DRESSING PERCENTAGE	62.48	%	7.00	10pt
1.3 EYE MUSCLE AREA	101.00	cm ²	7.50	10pt
Quality and Yield Factors				
2.1 P8 SITE FAT	3.00	mm	5.00	10pt
2.2 RIB SITE FAT	3.00	mm	6.00	10pt
2.3 DISTRIBUTION (VISUAL)			5.00	10pt
Quality Factors				
3.1 MEAT COLOUR	1C	1A-7	10.00	10pt
3.2 pH (ACIDITY)	5.32	5.1-7	3.00	5pt
3.3 FAT COLOUR & TEXTURE			5.00	10pt
3.4 MARBLING	0.00	0-6	4.00	5pt
3.5 WEIGHT FOR AGE MATURITY	2.40	0.7-2.7	8.00	10pt
OSSIFICATION	110.00	100-590		
TOTAL (100pt)			66.50	

18 Butcher Pastoral Company



VALUES WEIGHT GAINS

FTE/ HEIF	F
BREED	Bazadais X
ARRIVAL WEIGHT - KG	285
VALUE - CENTS/KG	325
INITIAL VALUE OF ANIMAL - \$	\$1,053.00
FINAL VALUE - \$	\$1,615.88
GAIN IN VALUE - \$	\$562.88
CHANGE IN VALUE - %	53.45
FEEDING COST - \$	\$450.00
NET GAIN - \$	\$112.88
INITIAL FEEDLOT WEIGHT - KG	324
WEIGHT AT 82 DAYS - KG	449
TOTAL WEIGHT GAIN - KG	125
WEIGHT GAIN % OF INIT. WEIGHT	38.58
AVG WEIGHT GAIN - KG/DAY AT 82 DAYS	1.524
AVG % WT GAIN & TOT KG GAIN (SCALED)	35.566
CHARLIE COTTER ALLROUNDER	254.935

EPBI		
LIVE WEIGHT	449.00	kg
HOT STANDARD CARCASS WEIGHT	278.60	kg

(15 point deduction for under 200kg)

Yield Factors

MUSCLE SCORE	B	A-E	8.00	10pt
1.1 DRESSING PERCENTAGE	62.05	%	7.00	10pt

Quality and Yield Factors

1.3 EYE MUSCLE AREA	91.00	cm2	4.50	10pt
2.1 P8 SITE FAT	6.00	mm	10.00	10pt
2.2 RIB SITE FAT	3.00	mm	6.00	10pt
2.3 DISTRIBUTION (VISUAL)			7.00	10pt

Quality Factors

3.1 MEAT COLOUR	1C	1A-7	10.00	10pt
3.2 pH (ACIDITY)	5.32	5.1-7	3.00	5pt
3.3 FAT COLOUR & TEXTURE			5.00	10pt
3.4 MARBLING	0.00	0-6	4.00	5pt
3.5 WEIGHT FOR AGE MATURITY	2.00	0.7-2.7	6.00	10pt
OSSIFICATION	140.00	100-590		

TOTAL (100pt) **70.50**



GYMPIE CARCASS CLASSIC - 2017

Prize Winners

ASSESSMENT OF BEST 6 CARCASSES AT THE START OF CLASSIC <i>SPONSORED BY GYMPIE REGIONAL COUNCIL</i>	1 st – Sean Wicks 2 nd – Luke Aisthorpe 3 rd – Emily Gorton
ASSESSMENT OF BEST 6 CARCASSES AT THE FINISH OF CLASSIC <i>SPONSORED BY GYMPIE REGIONAL COUNCIL</i>	1 st – Luke Aisthorpe 2 nd – Brent Evans 3 rd – Coster Jeffries
ALLROUNDER ASSESSMENT (6 HIGHEST SCORING) AT START OF CLASSIC <i>SPONSORED BY GYMPIE REGIONAL COUNCIL</i>	1 st – Peter Aisthorpe 2 nd – Sean Wicks 3 rd – Leon Franz
ALLROUNDER ASSESSMENT (6 HIGHEST SCORING) AT FINISH OF CLASSIC <i>SPONSORED BY GYMPIE REGIONAL COUNCIL</i>	1 st – Brent Evans 2 nd – Abby Nowland 3 rd – Jan Cotter
BEST JUNIOR (UNDER 18 YEARS) LIVE CATTLE ASSESSOR OF SELECTED 8 HEAD <i>SPONSORED BY ZOETIS</i>	1 st – Bronte Cramb 2 nd – Chloe Plowman 3 rd – Nateesha Taylor
MOST ACCURATE LIVE CATTLE ASSESSOR OF SELECTED 8 HEAD <i>SPONSORED BY CONNOLLY DORE LAWYERS</i>	1 st – Bernie Duncombe 2 nd – Sean Wicks 3 rd – Leon Franz
CHAMPION JUNIOR LIVE CATTLE ASSESSOR (UNDER 18 YEARS) <i>SPONSORED BY BEST ENVIRONMENTAL TECHNOLOGIES</i>	1 st – Chloe Andresassen 2 nd – Tamika Schultz
CHAMPION LIVE CATTLE ASSESSOR <i>SPONSORED BY N & N CHESHIRE</i>	1 st – Sean Wicks 2 nd – Leon Franz
CHAMPION INTERSCHOOL COMPETITION <i>SPONSORED BY DOUG PRATT LIVESTOCK TRANSPORT</i>	Gympie State High School – Entry 64
CARCASS WITH THE LARGEST EYE MUSCLE AREA <i>SPONSORED BY WARREGO LIVESTOCK TRANSPORT</i>	J & R Mercer – Entry 99 – 107cm ²
BEST WEIGHT GAIN IN FEEDLOT <i>SPONSORED BY GOLDMIX STOCKFEEDS</i>	1 st – Gyrenda Pastoral Co – Entry 71 2 nd – E J Goody – Entry 58 3 rd – B Kaddatz – Entry 81
HIGHEST INDEX SCORE <i>SPONSORED BY NOLAN MEATS</i>	Fitzgerald Family Trust – Entry 53 – 65.35
ENCOURAGEMENT AWARD <i>SPONSORED BY SPECKLE PARK INTERNATIONAL</i>	Lachlan Pratt
HIGHEST DRESSING PERCENTAGE <i>SPONSORED BY ALLFLEX</i>	Monal Grazing – Entry 104 – 65.96%
MOST SUCCESSFUL FIRST TIME EXHIBITOR <i>SPONSORED BY AG SOLUTIONS</i>	Butcher Pastoral Company
THE DYLAN DALTON CATTLEMAN'S CHOICE <i>SPONSORED BY GYMPIE VET SERVICES</i>	Rockdale Pastoral Company

HIGH POINT LIMOUSIN <i>SPONSORED BY TALANA LIMOUSINS</i>	D & H Pratt – Entry 125 – 273 Points
HIGH POINT CHAROLAIS <i>SPONSORED BY ELRIDGE CHAROLAIS</i>	J & R Mercer – Entry 99 – 244 Points
HIGH POINT BAZADAIS <i>SPONSORED BY THE AUSTRALIAN BAZADAIS CATTLE SOCIETY</i>	Butcher Pastoral Co – Entry 18 – 254 Points
HIGH POINT DROUGHTMASTER <i>SPONSORED BY TOPLINE DROUGHTMASTERS</i>	R J Orphant – Entry 114 – 205 Points
BEST AGGREGATE OF CARCASSES <i>SPONSORED BY TOM GRADY C.R.T</i>	1 st – D & H Pratt – 225 Points 2 nd – J & R Mercer – 215 Points 3 rd – E J Goody – 214.5 Points
MOST PROFITABLE ANIMAL <i>SPONSORED BY VIRBAC ANIMAL HEALTH</i>	1 st – Rockdale Pastoral Co – Entry 129 2 nd – Rockdale Pastoral Co – Entry 130 3 rd – Jen-Daview Limousin Stud – Entry 78
MOST SUITABLE CARCASS FOR THE DOMESTIC MARKET (HEIFER) <i>SPONSORED BY QUEENSLAND COUNTRY LIFE</i>	Rockdale Pastoral Co – Entry 130
MOST SUITABLE CARCASS FOR THE DOMESTIC MARKET <i>SPONSORED BY MEAT & LIVESTOCK AUSTRALIA</i>	1 st – Monal Grazing – Entry 104 2 nd – D & H Pratt – Entry 125 3 rd – Rockdale Pastoral Co – Entry 129
“THE CHARLIE COTTER ALLROUNDER” <i>SPONSORED BY SULLIVAN LIVESTOCK & RURAL SERVICES</i>	1 st – Monal Grazing – Entry 104 2 nd – Rockdale Pastoral Co – Entry 129 3 rd – D & H Pratt – Entry 125

2017 Gymmie Carcass Classic

VALUES WEIGHT GAINS

TRG NO	OWNER	FTE/HEF	DIST	BREED	ARRIVAL WGT (KG)	VALUE (K\$)	INITIAL VALUE (\$)	GAIN VALUE (\$)	CHANGE IN VALUE (%)	FEEDING COST (\$)	NET GAIN (\$)	INITIAL FEEDLOT WGT (KG)	WEIGHT AT 82 DAYS (KG)	TOTAL WGT GAIN (KG)	AVG WGT (KG/DAY)	DRESS WGT (KG)	DRESS %	CARCASS POINTS	Avg % Wt Gain (Scaled)	CHARLIE COTLER ROUNDER			
104	Monal Grazing		MON	Blonde D'Aquiline	236	325	\$806.00	\$1,373.58	567.58	70.42	\$450.00	\$117.58	248	356	108	43.55	1,317	234.80	65.96	89.0	34.820	309.224	
129	Rockdale Pastoral Co		ULO	Blonde D'Aquiline X	264	325	\$890.50	\$1,531.53	\$641.03	71.99	\$450.00	\$191.03	274	411	137	50.00	1,671	261.80	63.70	77.5	46.186	297.785	
159	Watson, S-J		GRA	Droughmaster	355	325	\$832.75	\$1,689.48	\$756.73	81.13	\$450.00	\$306.73	297	538	251	87.46	3,061	296.40	55.09	65.0	93.048	275.932	
140	Thompson Brothers		F	NAN Angus X Charolais X L	342	325	\$932.75	\$1,634.77	\$702.02	75.25	\$450.00	\$252.02	287	540	253	88.15	3,085	287.00	53.15	66.0	99.998	275.034	
123	Pratt, D & H		CHA	Limousin X	302	325	\$1,079.00	\$1,630.98	\$551.98	51.16	\$450.00	\$101.98	332	443	111	33.43	1,354	278.80	62.93	84.0	28.703	273.898	
130	Rockdale Pastoral Co		H	ULO	Blonde D'Aquiline X	276	295	\$843.70	\$1,483.92	\$620.22	73.51	\$450.00	\$170.22	286	410	124	43.36	1,524	252.40	61.66	77.0	38.557	273.914
131	Rockdale Pastoral Co		H	ULO	Blonde D'Aquiline X	285	295	\$778.80	\$1,239.27	\$460.47	59.13	\$450.00	\$10.47	284	393	129	48.86	1,573	245.40	57.53	74.0	43.483	260.314
123	Pratt, D & H		CHA	Limousin X	273	325	\$851.50	\$1,399.55	\$548.05	64.36	\$450.00	\$98.05	252	409	147	56.11	1,793	243.40	59.51	70.5	52.732	259.785	
18	Butcher Pastoral Comp		F	THE Bazadals X	285	325	\$1,053.00	\$1,615.88	\$562.88	53.45	\$450.00	\$112.88	324	449	125	38.58	1,524	278.60	62.05	70.5	35.566	254.935	
84	Kenny, R & D		F	GAY Braford	279	325	\$1,004.25	\$1,572.31	\$568.06	56.57	\$450.00	\$118.06	309	477	168	54.37	2,049	274.40	57.53	78.0	56.628	253.951	
56	Franz Pastoral Trust		MAN	Santa Gertrudis X	335	325	\$1,098.50	\$1,654.16	\$555.66	50.58	\$450.00	\$108.98	338	477	139	41.12	1,695	285.20	69.79	76.0	40.665	253.732	
54	Franz Pastoral Trust		MAN	Santa Gertrudis X	318	325	\$1,105.00	\$1,653.98	\$558.98	50.59	\$450.00	\$108.98	340	497	157	46.18	1,915	286.40	67.63	78.0	48.434	251.608	
106	Monal Grazing		H	MON/Blonde D'Aquiline	274	295	\$873.20	\$1,446.52	\$573.32	65.66	\$450.00	\$123.32	296	412	116	39.19	1,415	249.40	60.53	72.0	33.805	250.694	
64	Gymme State High Sch		H	GVM/Droughmaster X Limo	271	294	\$858.00	\$1,487.12	\$602.12	68.04	\$450.00	\$152.12	300	448	148	49.33	1,805	256.40	57.23	72.0	48.390	245.212	
99	Mercer, J & R		H	KAN Charolais	294	325	\$1,049.75	\$1,606.81	\$557.06	53.07	\$450.00	\$107.06	323	482	159	49.23	1,939	274.20	56.89	75.0	50.979	244.406	
26	Conitsky, G & S		H	CAP Bazadals X	369	295	\$1,088.60	\$1,691.65	\$603.05	55.83	\$450.00	\$156.05	368	500	132	38.87	1,610	294.20	68.84	71.5	35.425	242.085	
102	Mercer, J & R		H	KAN Charolais	293	325	\$1,014.80	\$1,616.34	\$601.54	59.28	\$450.00	\$151.54	344	498	154	44.77	1,878	278.20	65.86	74.5	46.756	238.926	
17	Butcher Pastoral Comp		F	THE Bazadals X	293	325	\$939.25	\$1,334.00	\$394.75	42.03	\$450.00	-\$55.25	289	427	138	47.75	1,683	266.80	62.48	66.5	44.906	237.772	
78	Jon-Dawey Limousin S		F	THE Bazadals X	274	325	\$855.50	\$1,459.28	\$603.78	70.58	\$450.00	\$153.78	290	446	156	53.79	1,902	251.60	65.41	66.5	53.338	236.363	
63	Goody, E J		MIN	Murray Grey X Drough	241	325	\$903.50	\$1,388.79	\$485.29	53.71	\$450.00	\$35.29	278	414	136	48.92	1,659	237.40	57.34	74.5	45.214	230.949	
88	Kingroy State High Sc		H	CHA Blonde D'Aquiline X	299	325	\$1,072.50	\$1,577.51	\$505.01	47.09	\$450.00	\$55.01	330	488	138	41.82	1,683	269.20	57.52	74.5	40.897	230.100	
122	Pratt, D & H		H	CHA Blonde D'Aquiline X	247	295	\$802.40	\$1,355.46	\$553.06	68.93	\$450.00	\$103.06	272	414	142	52.21	1,732	237.80	57.44	65.0	48.888	223.431	
91	Lacey, K & B		H	Bazadals X	347	295	\$1,147.55	\$1,746.98	\$599.43	52.24	\$450.00	\$149.43	389	544	155	39.95	1,890	309.20	56.84	66.0	43.671	228.002	
165	WV LLC, C & M		CAL	Bazadals X	302	325	\$1,075.51	\$1,540.01	\$464.26	43.16	\$450.00	\$14.26	331	443	112	33.84	1,366	262.80	63.32	76.0	29.222	228.968	
8	Black, R & J		F	TIA Hereford X Droughma	244	325	\$877.50	\$1,358.21	\$480.71	54.78	\$450.00	\$18.71	270	418	148	54.81	1,805	235.80	56.41	71.0	52.095	225.724	
150	Tropine Droughmaster		MTU	Droughmaster	326	325	\$1,186.25	\$1,654.76	\$468.51	39.5	\$450.00	\$13.51	365	512	147	40.27	1,793	289.80	56.60	71.5	42.023	225.678	
47	Empay Chartry		GVM	Chartry	283	325	\$1,124.50	\$1,666.31	\$541.81	48.18	\$450.00	\$91.81	346	530	184	53.18	2,244	286.80	54.11	69.5	59.689	224.720	
142	Thompson Brothers		FH	NAN Angus X Charolais X L	286	295	\$893.85	\$1,489.46	\$575.61	64.4	\$450.00	\$126.61	303	489	166	54.79	2,024	257.80	56.0	66.0	46.429	224.178	
158	Watson, S-J		F	CUR Shorthorn	301	325	\$1,085.50	\$1,582.50	\$497.00	45.79	\$450.00	\$47.00	334	493	159	47.60	1,939	274.80	55.74	71.5	59.877	222.308	
97	Mawhinny, L		H	MON/Blonde D'Aquiline	243	295	\$631.30	\$998.13	\$366.83	58.11	\$450.00	-\$83.17	214	342	128	59.81	1,561	205.80	60.18	67.0	50.640	222.059	
3	Aethope, L & M		F	GRA Bazadals X	287	325	\$978.25	\$1,469.95	\$491.70	50.26	\$450.00	\$14.70	301	453	152	50.50	1,854	255.20	55.92	73.0	50.147	215.386	
124	Pratt, D & H		H	CHA Bazadals X	278	325	\$903.50	\$1,372.03	\$443.54	38.55	\$450.00	-\$16.46	361	478	117	32.41	1,427	281.40	58.87	71.0	40.599	214.571	
80	Johannesen, R & K		BRO	Bazadals X	346	325	\$1,173.25	\$1,606.79	\$433.54	36.55	\$450.00	-\$16.46	361	478	117	32.41	1,427	281.40	58.87	71.0	40.599	214.571	
168	Zimmer, R & R		DAG	Blonde D'Aquiline X	232	325	\$815.75	\$1,234.94	\$419.19	51.39	\$450.00	-\$30.81	251	371	120	47.81	1,463	214.40	57.79	71.0	40.599	214.571	
62	Goody, E J		MON	Angus X Brangus	285	325	\$962.00	\$1,422.72	\$460.72	47.89	\$450.00	\$10.72	296	428	132	44.59	1,610	247.00	57.71	67.0	41.321	213.959	
120	Pratt, D & H		CHA	Blonde D'Aquiline	238	325	\$825.50	\$1,191.68	\$366.18	44.36	\$450.00	-\$83.82	254	408	154	60.63	1,878	243.20	59.61	57.5	57.479	213.936	
50	Fitzgerald Family Trust		RAI	Droughmaster X Sim	208	295	\$786.50	\$1,245.45	\$458.95	58.35	\$450.00	\$8.95	222	384	142	58.88	1,732	216.60	56.41	64.5	53.262	213.462	
71	Gyanda Pastoral Co		H	THE Santa Gertrudis	308	325	\$649.00	\$1,154.82	\$505.82	77.94	\$450.00	\$55.82	220	372	152	69.09	1,884	202.60	54.46	62.0	62.716	212.978	
35	Cotter, G & L		H	THE Santa Gertrudis	308	325	\$1,023.75	\$1,456.65	\$432.90	42.29	\$450.00	-\$17.10	315	417	102	32.38	1,244	249.00	59.71	70.5	25.819	212.899	
92	Lacey, K & B		LW	Bazadals X	327	325	\$1,124.50	\$1,580.67	\$456.17	40.57	\$450.00	\$6.17	346	459	113	32.66	1,378	270.20	59.71	70.5	28.665	212.812	
81	Kaddatz, B		WO	Gelvelin X Brahman	289	325	\$916.50	\$1,408.90	\$492.40	53.73	\$450.00	\$42.40	282	444	162	57.46	1,976	244.60	55.09	63.0	57.261	211.277	
58	Goody, E J		MON	Limousin	255	325	\$913.25	\$1,359.36	\$446.11	48.85	\$450.00	-\$33.89	281	443	162	57.65	1,976	236.00	53.27	73.0	47.397	209.846	
103	Mercer, J & R		H	KAN Chartry	270	295	\$961.70	\$1,495.68	\$533.98	52.04	\$450.00	\$83.98	326	479	153	46.93	1,866	262.40	59.82	65.0	47.975	209.703	
108	Mooney, J & P		GVA	Droughmaster X	334	325	\$767.00	\$1,165.12	\$399.12	52.04	\$450.00	-\$50.88	236	342	106	44.92	1,263	204.60	59.82	65.0	35.253	209.693	
28	Conitsky, G & S		H	CAP Bazadals X	307	295	\$879.10	\$1,372.56	\$493.46	56.13	\$450.00	\$43.46	298	428	128	42.98	1,561	240.80	56.14	68.5	43.577	209.326	
112	Murphy State High Sch		MIN	Droughmaster X Baza	210	325	\$1,192.75	\$1,657.56	\$464.81	38.97	\$450.00	\$14.81	367	518	151	41.14	1,841	290.80	56.14	68.5	39.246	208.096	
77	Hinchliffe, J		F	IMB Shorthorn X	204	325	\$737.75	\$1,055.66	\$315.91	42.82	\$450.00	-\$134.09	227	347	120	52.86	1,463	206.60	59.54	66.0	44.013	206.937	
20	Chambers, T		F	IMB Shorthorn X	210	325	\$750.75	\$1,159.20	\$408.45	54.41	\$450.00	-\$41.55	231	305	107	35.08	1,305	242.60	56.88	70.5	28.852	206.768	
134	Ross, C & H		F	GVM/Droughmaster X Baza	300	325	\$																

2017 Gympie Carcass Classic

VALUES WEIGHT GAINS

TAG NO	OWNER	SEX	BREED	ARRIVAL WEIGHT KG	VALUE CENTS /KG	INITIAL VALUE \$	FINAL VALUE \$	GAIN IN VALUE \$	CHANGE VALUE %	FEEDING COST \$	NET GAIN \$	INITIAL FEEDLOT WEIGHT KG	WEIGHT AT 8 WKS KG	TOTAL WEIGHT KG	WEIGHT % OF FINIT WEIGHT	AUG WEIGHT KG/AT 8 WKS	BRESS WEIGHT KG	DRESS %	CARCASS POINTS	AVG % FAT/GAIN (SCALE)	CHARLIE COB LLS ROUND
16	Brathwaite, C	F	MUR Gelbvieh	341	325	\$1,150.50	\$1,605.89	\$455.39	39.58	\$450.00	\$5.39	354	508	154	43.50	1.878	278.80	54.88	70.0	45.898	204.877
45	Durcombe, B	NAN	Limousin X	264	325	\$939.25	\$1,256.64	\$317.39	33.79	\$450.00	-\$132.61	289	411	122	42.21	1.488	246.40	59.96	67.0	37.528	204.608
90	Lacey, K & B	H	Barzadis X	263	295	\$831.90	\$1,302.95	\$471.05	66.52	\$450.00	\$21.05	282	403	121	42.91	1.476	226.60	56.23	68.0	44.212	202.977
172	Zerner, R & R	F	DAG Blonde D'Aquitaine X	224	325	\$1,118.00	\$1,108.38	\$306.63	38.07	\$450.00	-\$144.37	247	373	126	41.73	1.537	226.20	55.03	68.5	43.686	202.538
139	Thompson Brothers	F	NAN Angus X Charolais X L	312	325	\$1,118.00	\$1,583.37	\$395.65	41.63	\$450.00	-\$54.35	344	491	147	42.73	1.793	270.20	55.03	70.0	47.930	201.149
10	Black, R & J	F	TIA Hereford X Droughma	210	325	\$956.75	\$1,259.10	\$310.35	32.37	\$450.00	-\$139.65	236	366	130	55.08	1.578	202.20	59.95	60.5	43.779	199.655
128	Pratt, D & H	CHA	Limousin	280	325	\$994.50	\$1,429.84	\$435.34	43.77	\$450.00	-\$114.66	306	440	144	43.79	1.634	244.00	55.45	69.0	41.263	199.496
79	Johannsen, R & K	H	BRO Barzadis X	288	325	\$929.25	\$1,390.84	\$461.59	49.67	\$450.00	-\$174.52	315	422	107	33.97	1.305	239.80	66.82	64.0	28.102	198.492
144	Thompson, B & L	H	MTU Droughma X Simb	270	295	\$929.25	\$1,390.84	\$461.59	49.67	\$450.00	-\$174.52	315	422	107	33.97	1.305	239.80	66.82	64.0	28.102	198.492
139	Thompson Brothers	F	NAN Angus X Charolais X L	312	325	\$1,118.00	\$1,583.37	\$395.65	41.63	\$450.00	-\$54.35	236	366	130	55.08	1.578	202.20	59.95	60.5	43.779	199.655
10	Black, R & J	F	TIA Hereford X Droughma	210	325	\$956.75	\$1,259.10	\$310.35	32.37	\$450.00	-\$139.65	236	366	130	55.08	1.578	202.20	59.95	60.5	43.779	199.655
128	Pratt, D & H	CHA	Limousin	280	325	\$994.50	\$1,429.84	\$435.34	43.77	\$450.00	-\$114.66	306	440	144	43.79	1.634	244.00	55.45	69.0	41.263	199.496
79	Johannsen, R & K	H	BRO Barzadis X	288	325	\$929.25	\$1,390.84	\$461.59	49.67	\$450.00	-\$174.52	315	422	107	33.97	1.305	239.80	66.82	64.0	28.102	198.492
144	Thompson, B & L	H	MTU Droughma X Simb	270	295	\$929.25	\$1,390.84	\$461.59	49.67	\$450.00	-\$174.52	315	422	107	33.97	1.305	239.80	66.82	64.0	28.102	198.492
139	Thompson Brothers	F	NAN Angus X Charolais X L	312	325	\$1,118.00	\$1,583.37	\$395.65	41.63	\$450.00	-\$54.35	236	366	130	55.08	1.578	202.20	59.95	60.5	43.779	199.655
10	Black, R & J	F	TIA Hereford X Droughma	210	325	\$956.75	\$1,259.10	\$310.35	32.37	\$450.00	-\$139.65	236	366	130	55.08	1.578	202.20	59.95	60.5	43.779	199.655
128	Pratt, D & H	CHA	Limousin	280	325	\$994.50	\$1,429.84	\$435.34	43.77	\$450.00	-\$114.66	306	440	144	43.79	1.634	244.00	55.45	69.0	41.263	199.496
79	Johannsen, R & K	H	BRO Barzadis X	288	325	\$929.25	\$1,390.84	\$461.59	49.67	\$450.00	-\$174.52	315	422	107	33.97	1.305	239.80	66.82	64.0	28.102	198.492
144	Thompson, B & L	H	MTU Droughma X Simb	270	295	\$929.25	\$1,390.84	\$461.59	49.67	\$450.00	-\$174.52	315	422	107	33.97	1.305	239.80	66.82	64.0	28.102	198.492
139	Thompson Brothers	F	NAN Angus X Charolais X L	312	325	\$1,118.00	\$1,583.37	\$395.65	41.63	\$450.00	-\$54.35	236	366	130	55.08	1.578	202.20	59.95	60.5	43.779	199.655
10	Black, R & J	F	TIA Hereford X Droughma	210	325	\$956.75	\$1,259.10	\$310.35	32.37	\$450.00	-\$139.65	236	366	130	55.08	1.578	202.20	59.95	60.5	43.779	199.655
128	Pratt, D & H	CHA	Limousin	280	325	\$994.50	\$1,429.84	\$435.34	43.77	\$450.00	-\$114.66	306	440	144	43.79	1.634	244.00	55.45	69.0	41.263	199.496
79	Johannsen, R & K	H	BRO Barzadis X	288	325	\$929.25	\$1,390.84	\$461.59	49.67	\$450.00	-\$174.52	315	422	107	33.97	1.305	239.80	66.82	64.0	28.102	198.492
144	Thompson, B & L	H	MTU Droughma X Simb	270	295	\$929.25	\$1,390.84	\$461.59	49.67	\$450.00	-\$174.52	315	422	107	33.97	1.305	239.80	66.82	64.0	28.102	198.492
139	Thompson Brothers	F	NAN Angus X Charolais X L	312	325	\$1,118.00	\$1,583.37	\$395.65	41.63	\$450.00	-\$54.35	236	366	130	55.08	1.578	202.20	59.95	60.5	43.779	199.655
10	Black, R & J	F	TIA Hereford X Droughma	210	325	\$956.75	\$1,259.10	\$310.35	32.37	\$450.00	-\$139.65	236	366	130	55.08	1.578	202.20	59.95	60.5	43.779	199.655
128	Pratt, D & H	CHA	Limousin	280	325	\$994.50	\$1,429.84	\$435.34	43.77	\$450.00	-\$114.66	306	440	144	43.79	1.634	244.00	55.45	69.0	41.263	199.496
79	Johannsen, R & K	H	BRO Barzadis X	288	325	\$929.25	\$1,390.84	\$461.59	49.67	\$450.00	-\$174.52	315	422	107	33.97	1.305	239.80	66.82	64.0	28.102	198.492
144	Thompson, B & L	H	MTU Droughma X Simb	270	295	\$929.25	\$1,390.84	\$461.59	49.67	\$450.00	-\$174.52	315	422	107	33.97	1.305	239.80	66.82	64.0	28.102	198.492
139	Thompson Brothers	F	NAN Angus X Charolais X L	312	325	\$1,118.00	\$1,583.37	\$395.65	41.63	\$450.00	-\$54.35	236	366	130	55.08	1.578	202.20	59.95	60.5	43.779	199.655
10	Black, R & J	F	TIA Hereford X Droughma	210	325	\$956.75	\$1,259.10	\$310.35	32.37	\$450.00	-\$139.65	236	366	130	55.08	1.578	202.20	59.95	60.5	43.779	199.655
128	Pratt, D & H	CHA	Limousin	280	325	\$994.50	\$1,429.84	\$435.34	43.77	\$450.00	-\$114.66	306	440	144	43.79	1.634	244.00	55.45	69.0	41.263	199.496
79	Johannsen, R & K	H	BRO Barzadis X	288	325	\$929.25	\$1,390.84	\$461.59	49.67	\$450.00	-\$174.52	315	422	107	33.97	1.305	239.80	66.82	64.0	28.102	198.492
144	Thompson, B & L	H	MTU Droughma X Simb	270	295	\$929.25	\$1,390.84	\$461.59	49.67	\$450.00	-\$174.52	315	422	107	33.97	1.305	239.80	66.82	64.0	28.102	198.492
139	Thompson Brothers	F	NAN Angus X Charolais X L	312	325	\$1,118.00	\$1,583.37	\$395.65	41.63	\$450.00	-\$54.35	236	366	130	55.08	1.578	202.20	59.95	60.5	43.779	199.655
10	Black, R & J	F	TIA Hereford X Droughma	210	325	\$956.75	\$1,259.10	\$310.35	32.37	\$450.00	-\$139.65	236	366	130	55.08	1.578	202.20	59.95	60.5	43.779	199.655
128	Pratt, D & H	CHA	Limousin	280	325	\$994.50	\$1,429.84	\$435.34	43.77	\$450.00	-\$114.66	306	440	144	43.79	1.634	244.00	55.45	69.0	41.263	199.496
79	Johannsen, R & K	H	BRO Barzadis X	288	325	\$929.25	\$1,390.84	\$461.59	49.67	\$450.00	-\$174.52	315	422	107	33.97	1.305	239.80	66.82	64.0	28.102	198.492
144	Thompson, B & L	H	MTU Droughma X Simb	270	295	\$929.25	\$1,390.84	\$461.59	49.67	\$450.00	-\$174.52	315	422	107	33.97	1.305	239.80	66.82	64.0	28.102	198.492
139	Thompson Brothers	F	NAN Angus X Charolais X L	312	325	\$1,118.00	\$1,583.37	\$395.65	41.63	\$450.00	-\$54.35	236	366	130	55.08	1.578	202.20	59.95	60.5	43.779	199.655
10	Black, R & J	F	TIA Hereford X Droughma	210	325	\$956.75	\$1,259.10	\$310.35	32.37	\$450.00	-\$139.65	236	366	130	55.08	1.578	202.20	59.95	60.5	43.779	199.655
128	Pratt, D & H	CHA	Limousin	280	325	\$994.50	\$1,429.84	\$435.34	43.77	\$450.00	-\$114.66	306	440	144	43.79	1.634	244.00	55.45	69.0	41.263	199.496
79	Johannsen, R & K	H	BRO Barzadis X	288	325	\$929.25	\$1,390.84	\$461.59	49.67	\$450.00	-\$174.52	315	422	107	33.97	1.305	239.80	66.82	64.0	28.102	198.492
144	Thompson, B & L	H	MTU Droughma X Simb	270	295	\$929.25	\$1,390.84	\$461.59	49.67	\$450.00	-\$174.52	315	422	107	33.97	1.305	239.80	66.82	64.0	28.102	198.492
139	Thompson Brothers	F	NAN Angus X Charolais X L	312	325	\$1,118.00	\$1,583.37	\$395.65	41.63	\$450.00	-\$54.35	236	366	130	55.08	1.578	202.20	59.95	60.5	43.779	199.655
10	Black, R & J	F	TIA Hereford X Droughma	210	325	\$956.75	\$1,259.10	\$310.35	32.37	\$450.00	-\$139.65	236	366	130	55.08	1.578	202.20	59.95	60.5	43.779	199.655
128	Pratt, D & H	CHA	Limousin	280	325	\$994.50	\$1,429.84	\$435.34	43.77	\$450.00	-\$114.66	306	440	144	43.79	1.634	244.00	55.45	69.0	41.263	199.496
79	Johannsen, R & K	H	BRO Barzadis X	288	325	\$929.25	\$1,390.84	\$461.59	49.67	\$450.00	-\$174.52	315	422	107	33.97	1.305	239.80	66.82	64.0	28.102	198.492
144	Thompson, B & L	H	MTU Droughma X Simb	270	295	\$929.25	\$1,390.84	\$461.59	49.67	\$450.00	-\$174.52	315	422	107	33.97	1.305	239.80				

2017 Gymmie Carcass Classic

VALUES WEIGHT GAINS

TAG NO	OWNER	F/E/ HERF	DIST	BREED	ARRIVAL WEIGHT (KG)	VALUE (CENS) (KG)	INITIAL VALUE (\$)	FINAL VALUE (\$)	GAINING VALUE (\$)	CHARGE VALUE (%)	FEEDING COST (\$)	NET FEEDING (\$)	INITIAL WEIGHT (KG)	WEIGHT AT REPAIRS (KG)	TOTAL WEIGHT (KG)	WEIGHT GAIN (% OF INT WEIGHT)	AVG WEIGHT GAIN (KG/DAY)	DRESS WEIGHT (KG)	DRESS %	CARCASS POINTS	AVG % WT GAIN (TOTAL) (SOUND)	CHARLE COTTER ROUNDER
154	Vale View Droughthmaster	MAN	Droughthmaster	279	325	\$977.75	\$1,298.30	\$326.55	33.6	\$450.00	-\$123.45	299	417	118	39.46	1.439	225.40	54.05	67.5	34.471	166.769	
74	Granda Pastoral Co	H	THE Santa Gertrudis	271	295	\$970.55	\$1,420.44	\$449.89	46.35	\$450.00	-\$0.11	329	498	169	51.37	2.061	249.20	50.04	60.0	54.842	166.546	
65	Gymmie State High Sch	GVM	Droughthmaster X Lino	219	325	\$744.25	\$1,106.56	\$362.31	48.68	\$450.00	-\$87.69	229	492	127	55.46	1.549	197.60	55.51	50.0	47.462	165.544	
13	Bohams, D	GVM	Limousin	349	295	\$1,186.25	\$1,524.90	\$338.65	28.55	\$450.00	-\$111.35	365	456	127	34.79	1.549	265.20	53.90	66.5	33.487	164.867	
31	Bohams, G & S	H	CAP Bazadats X	319	295	\$1,023.65	\$1,462.62	\$438.97	42.88	\$450.00	-\$11.03	347	470	123	35.45	1.500	296.80	54.60	55.5	32.967	164.578	
106	Mooney, J & P	GLA	Droughthmaster X	305	325	\$1,179.75	\$1,459.81	\$280.06	23.74	\$450.00	-\$169.94	363	502	139	38.29	1.695	270.80	53.94	67.5	38.752	164.068	
59	Goody, E J	MON	Angulus X Simmental	259	325	\$965.25	\$1,316.57	\$351.32	36.4	\$450.00	-\$98.68	297	420	133	44.78	1.522	229.00	53.26	61.5	41.691	162.701	
52	Fitzgerald Family Trust	RAI	Charolais X Droughth	274	325	\$955.50	\$1,277.65	\$322.15	33.72	\$450.00	-\$127.85	294	470	124	42.18	1.512	222.20	53.16	66.5	37.759	162.258	
2A	Templeton & Son	EUM	Droughthmaster X	303	325	\$1,075.75	\$1,468.80	\$393.05	36.54	\$450.00	-\$56.95	331	470	139	41.99	1.695	255.00	54.26	54.0	41.254	162.096	
109	Mooney, J & P	GLA	Droughthmaster X	288	325	\$1,062.75	\$1,392.65	\$329.90	31.04	\$450.00	-\$120.10	327	450	123	37.61	1.480	242.20	53.82	65.0	34.428	161.702	
149	Topline Droughthmaster	MTU	Droughthmaster X	212	325	\$1,137.50	\$1,481.20	\$343.70	30.22	\$450.00	-\$106.30	350	472	122	34.86	1.488	257.60	54.58	61.5	32.327	160.597	
87	Klcoy State High Scho	KIL	Droughthmaster X	277	325	\$932.75	\$1,251.20	\$318.45	34.14	\$450.00	-\$131.55	287	406	119	41.46	1.451	217.60	53.60	65.0	36.064	160.407	
110	Mooney, J & P	RAI	Droughthmaster X	331	325	\$981.50	\$1,312.15	\$330.65	28.36	\$450.00	-\$119.35	302	423	127	42.05	1.549	228.20	53.19	63.0	38.396	158.888	
51	Fitzgerald Family Trust	F	Droughthmaster X Sim	282	325	\$929.50	\$1,265.62	\$336.12	36.16	\$450.00	-\$113.88	286	430	144	50.35	1.756	224.80	52.28	60.0	48.113	158.491	
82	Kenny, R & D	H	THE Santa Gertrudis	207	295	\$893.25	\$1,096.68	\$403.43	58.19	\$450.00	-\$46.57	235	383	128	54.47	1.561	197.60	54.44	45.5	47.034	156.702	
70	Granda Pastoral Co	H	Charolais X	256	295	\$852.50	\$1,200.24	\$347.69	40.78	\$450.00	-\$102.31	289	392	93	32.18	1.134	210.20	55.03	62.0	23.510	155.953	
34	Cooranga Charolais (B)	GO	Brahman X Romagnol	300	325	\$1,095.25	\$1,404.15	\$308.90	28.2	\$450.00	-\$141.10	337	450	113	33.53	1.378	244.20	54.27	64.6	29.254	155.706	
9	Black, R & J	F	TIA Hereford X Droughth	250	295	\$1,138.70	\$1,468.77	\$330.07	26.99	\$450.00	-\$117.94	281	411	130	33.53	1.585	216.20	52.60	61.0	41.967	156.419	
57	Franz Pastoral Trust	H	MAN Santa Gertrudis X	265	295	\$970.55	\$1,370.28	\$359.73	41.19	\$450.00	-\$50.27	329	471	142	43.16	1.732	240.40	51.04	59.0	42.769	152.353	
69	Granda Pastoral Co	H	THE Santa Gertrudis	275	295	\$885.50	\$1,238.04	\$353.04	38.89	\$450.00	-\$96.96	300	387	87	29.00	1.061	217.20	56.12	66.5	19.911	151.053	
27	Connsley, G & S	H	CAP Bazadats X	280	295	\$855.00	\$1,156.35	\$321.35	26.02	\$450.00	-\$128.65	380	495	115	30.26	1.402	270.20	54.59	60.0	27.516	150.415	
113	Oford, J	F	MUR Simmental X	300	325	\$1,030.25	\$1,293.75	\$263.50	26.58	\$450.00	-\$188.50	317	404	87	27.44	1.061	225.00	55.69	64.5	18.866	148.084	
86	Kenny, R & D	KAN	Charolais	276	325	\$1,062.75	\$1,248.96	\$186.21	17.52	\$450.00	-\$65.75	327	480	153	46.79	1.866	260.20	54.21	58.5	47.880	147.676	
101	Merret, J & R	FH	ARA Limousin X	282	295	\$690.30	\$983.25	\$292.95	42.44	\$450.00	-\$157.05	334	448	124	52.99	1.512	207.00	57.82	37.0	45.067	147.305	
128	Part, L	EUM	Droughthmaster X	227	325	\$997.75	\$1,319.01	\$321.26	32.2	\$450.00	-\$128.74	307	455	138	44.34	1.671	231.00	51.91	58.5	43.013	146.637	
1A	A Templeton & Son	GLA	Droughthmaster X	280	325	\$1,004.25	\$1,328.25	\$324.00	32.26	\$450.00	-\$126.00	309	446	97	44.34	1.671	231.00	51.79	58.5	42.359	145.600	
111	Mooney, J & P	MTU	Droughthmaster X Simb	277	325	\$997.75	\$1,259.52	\$281.50	26.21	\$450.00	-\$188.50	307	397	90	29.32	1.098	219.00	55.16	63.5	20.852	144.667	
146	Thompson, B & L	GUN	Droughthmaster	325	325	\$1,121.25	\$1,456.92	\$335.67	29.94	\$450.00	-\$114.33	345	507	165	44.93	1.890	255.60	51.12	66.5	47.106	144.492	
115	Orphant, RJ	H	CAP Bazadats X	309	295	\$958.75	\$1,312.14	\$353.39	38.86	\$450.00	-\$96.61	325	428	103	31.69	1.256	230.20	53.79	66.5	25.594	142.448	
32	Connsley, G & S	H	CAP Bazadats X	309	295	\$1,082.68	\$1,406.76	\$324.11	29.94	\$450.00	-\$126.89	367	480	113	30.79	1.378	246.80	51.42	66.5	27.401	139.622	
21	Cheahre, N & N	H	WIN Limousin X	329	295	\$775.88	\$977.55	\$201.70	26	\$450.00	-\$248.30	263	361	98	37.26	1.159	205.80	57.01	53.0	28.152	138.760	
46	Duncombe, B	H	LW Bazadats X	312	295	\$1,041.35	\$1,391.94	\$350.59	33.67	\$450.00	-\$99.41	353	448	95	26.97	1.159	244.20	54.51	55.0	20.430	138.709	
94	Lacey, K & B	H	MAN Santa Gertrudis X	260	325	\$1,202.50	\$1,393.92	\$191.42	15.92	\$450.00	-\$258.58	370	425	55	14.86	0.671	242.00	56.94	69.0	2.621	137.204	
56	Franz Pastoral Trust	H	CAP Bazadats X	305	295	\$1,044.30	\$1,368.00	\$323.70	31	\$450.00	-\$126.50	354	463	109	30.79	1.329	240.00	51.84	61.5	26.435	134.787	
27	Granda Pastoral Co	H	THE Santa Gertrudis	178	295	\$572.30	\$909.36	\$337.06	58.9	\$450.00	-\$112.94	194	330	136	70.10	1.659	168.40	51.03	42.5	59.534	133.862	
83	Kenny, R & D	F	GAY Braford	299	325	\$1,056.25	\$1,268.45	\$302.52	20.09	\$450.00	-\$237.80	325	463	78	24.00	0.951	220.60	54.74	64.0	14.356	129.868	
30	Connsley, G & S	H	CAP Bazadats X	325	295	\$1,097.40	\$1,399.92	\$302.52	27.57	\$450.00	-\$142.93	372	464	92	24.73	1.122	245.60	52.93	60.0	18.232	128.145	
89	Kingroy State High Sch	H	KIN Limousin X Grayman	246	295	\$756.20	\$1,062.27	\$307.07	40.66	\$450.00	-\$142.93	266	354	98	38.28	1.195	191.40	54.07	48.0	28.842	127.177	
137	Seeney, M	SEX	Charbray	279	325	\$1,062.50	\$1,269.50	\$187.25	17.3	\$450.00	-\$26.75	333	399	66	19.82	0.805	220.40	55.24	63.5	8.632	123.102	
40	Crossley, J & R	H	WO Charolais X	330	295	\$1,103.30	\$1,454.10	\$350.80	31.8	\$450.00	-\$99.20	374	484	110	29.41	1.341	222.00	54.35	43.0	25.744	122.309	
145	Thompson, B & L	MTU	Hereford X Droughth	275	325	\$1,072.50	\$1,449.00	\$76.50	7.13	\$450.00	-\$373.50	330	411	81	24.55	0.988	229.80	55.91	58.0	15.453	110.273	
167	Vvillie, C & M	H	CAL Bazadats X	229	295	\$965.80	\$1,058.27	\$102.47	10.72	\$450.00	-\$284.50	324	374	46	14.20	0.561	178.20	58.97	50.0	0.001	104.653	
75	Granda Pastoral Co	H	THE Santa Gertrudis	180	295	\$604.75	\$769.85	\$165.10	27.3	\$450.00	-\$284.50	205	310	109	53.17	1.329	213.00	55.10	59.0	41.566	96.515	
25	Connsley, G & S	H	CAP Bazadats X	289	295	\$896.80	\$1,029.80	\$133.00	14.83	\$450.00	-\$317.00	304	388	84	27.63	1.024	216.80	55.88	43.0	18.260	96.344	
68	Granda Pastoral Co	H	THE Santa Gertrudis	148	295	\$507.40	\$637.71	\$130.31	25.68	\$450.00	-\$319.69	172	282	111	64.53	1.354	146.60	51.80	35.5	49.729	89.725	
29	Connsley, G & S	H	CAP Bazadats X	312	295	\$1,011.85	\$1,181.04	\$169.19	16.72	\$450.00	-\$280.81	343	392	49	14.29	0.598	207.20	52.66	57.5	0.797	88.185	
147	Thompson, B & L	MTU	Droughthmaster X Simb	246	325	\$851.50	\$869.26	\$17.76	2.09	\$450.00	-\$432.24	262	342	80	30.53	0.976	177.40	51.87	27.0	19.254	30.749	
133	Ross, C & H	GO	Brahman X Angulus	387	325	\$1,374.75	\$1,750.18	\$375.43	27.31	\$450.00	-\$74.57	423	612	189	44.66	2.305	329.60	53.66	61.5	55.150	40.727	
162	Watson, S-J	F	GRA Braford	437	325	\$1,537.25	\$1,980.57	\$43.32	2.82	\$450.00	-\$406.68	473	638	165	34.88	2.012	328.60	51.80	64	42.177	187.420	
				286	315.31																	

2017 Gympie Carcass Classic

CARCASS MEASUREMENTS

NO	OWNER	WEIGHT AT 28 DAYS AGO	CARCASS WEIGHT	DRESSED WEIGHT %	DRESSING % POINTS (MAX 10)	EYE MUSCLE AREA (SQ IN)	EYE MUSCLE SCORE (MAX 10)	MUSCLE SCORE A+ TO E	MUSCLE SCORE POINTS (MAX 10)	FAT DEPTH (MM)	FAT DEPTH POINTS (MAX 10)	FAT DEPTH (MM)	FAT DEPTH POINTS (MAX 10)	FAT DEPTH (MM)	FAT DEPTH POINTS (MAX 10)	FAT DEPTH (MM)	FAT DEPTH POINTS (MAX 10)	pH	pH SCORE (MAX 5)	MEAT COLOUR SCORE	MEAT COLOUR (MAX 10)	FAT COLOUR SCORE (MAX 5)	MARBLING SCORE	MARBLING POINTS (MAX 5)	OSS SCORE	WEIGHT FOR AGE POINTS (MAX 10)	TAG NO	TOTAL POINTS
104	Monal Grazing	356	234.8	65.96	19	100	9B+		9	5	10	3	6	5	5.62	5.1C	10	5	0	4	100	7	104	89				
125	Pratt, D & H	443	278.8	62.93	8	93	5B+		9	12	10	6	10	10	5.62	5.1C	10	5	0	4	110	8	125	84				
54	Franz Pastoral Trust	497	286.4	57.63	3	95	5B		8	6	10	6	10	9	5.32	3.1C	10	5	1	5	100	10	54	78				
150	Topline Droughmaster (512	289.8	56.6	2	97	5.5B		8	5	10	6	10	9	5.32	3.1C	10	5	1	5	100	10	150	77.5				
129	Rockdale Pastoral Co	411	261.8	63.7	9	91	5.5B+		9	5	10	3	6	6	5.36	5.1C	10	5	0	4	100	9	129	77.5				
130	Rockdale Pastoral Co	440	252.4	61.56	7	103	9B		8	5	10	4	9	6	5.32	3.1C	10	5	1	5	130	5	130	77				
156	Wylie, C & M	443	262.8	59.32	4	93	6B		8	5	10	4	9	6	5.41	5.1C	10	5	0	4	100	9	156	76				
131	Rockdale Pastoral Co	393	246.4	62.44	7	104	9B		8	3	5	4	9	8	5.41	5.1C	10	5	0	4	120	6	131	76				
56	Franz Pastoral Trust	477	285.2	59.79	5	91	4B		8	6	10	5	10	6	5.62	5.2	10	5	0	4	110	9	56	76				
99	Mercer, J & R	482	274.2	58.89	2	107	5.8B		8	5	10	5	10	6	5.32	3.1C	10	5	0	4	110	8	99	75				
88	Kingaroy State High Sch	468	269.2	57.52	3	90	4.5B		8	8	10	7	10	7	5.35	3.1C	10	5	1	5	100	9	88	74.5				
63	Goody, E J	414	237.4	57.34	2	91	6.5B		8	7	10	5	10	8	5.41	5.1C	10	5	0	4	120	6	63	74.5				
102	Mercer, J & R	498	278.2	55.86	1	103	7.5B		8	5	10	5	10	7	5.41	5.1B	10	5	1	5	140	6	102	74.5				
123	Pratt, D & H	409	243.4	59.51	5	94	7C+		6	5	10	5	10	6	5.66	3.2	10	5	0	4	100	8	123	74				
105	Monal Grazing	412	249.4	60.53	6	95	6.5B		8	5	10	5	10	5	5.32	3.1C	10	5	0	4	120	6	105	74				
84	Kenny, R & D	477	274.4	57.53	3	84	3B		8	7	10	5	10	9	5.41	5.1C	10	5	0	4	120	7	84	74				
58	Goody, E J	443	236	53.27	0	85	5B		8	9	10	4	9	9	5.41	5.1C	10	5	0	4	100	8	58	73				
93	Lacey, K & B	408	220.2	53.97	4	86	3C+		6	5	10	5	10	7	5.41	5.1C	10	5	1	5	100	9	93	73				
6	Black, R & J	408	281.4	58.87	0	87	6.5C+		6	5	10	4	9	9	5.41	5.1C	10	5	0	4	110	7	6	72.5				
64	Gympie State High Scho	448	256.4	57.23	2	78	2B		8	5	10	7	10	7	5.41	5.1C	10	5	0	4	100	9	64	72				
26	Conlisky, G & S	500	294.2	58.84	4	97	5.5B		8	8	10	5	10	9	5.65	3.2	10	5	0	4	180	3	26	71.5				
158	Watson, S-J	493	274.8	55.74	1	94	5.5C+		6	6	10	6	10	9	5.32	3.1B	10	5	1	5	120	7	158	71.5				
168	Zerner, R & R	371	214.4	57.79	3	76	4C+		6	6	10	6	10	7	5.32	5.2	10	5	1	5	100	6	168	71				
8	Black, R & J	418	235.6	56.41	1	93	7C		5	7	10	6	10	8	5.41	5.1C	10	5	0	4	110	6	8	71				
35	Cotter, G & L	412	249	59.71	5	85	4.5B		8	5	10	6	10	6	5.32	3.2	10	5	0	4	140	5	35	70.5				
77	Hinchliffe, J	417	242.5	58.88	4	87	5.5C		5	5	10	6	10	7	5.65	3.1C	10	5	0	4	110	7	77	70.5				
18	Butcher-Pastoral Compa	449	278.6	62.05	7	91	4.5B		8	6	10	3	6	7	5.32	3.1C	10	5	0	4	140	6	18	70.5				
156	Valt View Droughmaster	473	264.4	55.9	1	78	2C+		6	7	10	5	10	9	5.41	5.2	10	5	0	4	110	8	156	70				
16	Brathwaite, C	508	278.8	54.88	0	93	5C+		6	5	10	5	10	6	5.33	5.2	10	5	0	4	110	8	16	70				
92	Lacey, K & B	459	270.2	58.97	4	92	6C+		6	5	10	5	10	6	5.32	3.1C	10	5	0	4	120	7	92	70				
10	Black, R & J	366	202.2	55.25	0	78	5C+		6	5	10	6	10	9	5.33	5.1C	10	5	1	5	100	6	10	70				
47	Emley Charbray	530	288.6	54.11	0	89	3.5B		8	8	10	10	6	9	5.32	3.1C	10	5	0	4	100	10	47	69.5				
134	Ross, C & H	497	275.6	56.45	0	84	2.5C		5	7	10	4	9	9	5.41	5.1C	10	5	0	4	100	10	134	69.5				
49	Fitzgerald Family Trust	373	214.6	57.53	3	81	5.5C		5	5	10	4	9	9	5.32	3.1C	10	5	0	4	100	6	49	69.5				
96	Mawhinney, L	409	230.4	56.33	1	87	6C		5	9	10	4	9	7	5.62	5.1C	10	5	0	4	100	7	96	69				
79	Johannsen, R & K	440	244	55.45	0	82	4B		8	5	10	6	10	8	5.65	3.1C	10	5	0	4	110	7	79	69				
15	Brathwaite, C	516	284	55.04	2	89	4C		5	5	10	6	10	6	5.41	5.1C	10	5	1	5	110	9	15	69				
144	Thompson, B & L	422	239.8	56.52	0	78	3B		8	5	10	6	10	10	5.32	3.2	10	5	0	4	140	4	144	69				
135	Ross, C & H	612	324.4	53.01	0	93	3C+		6	5	10	8	9	8	5.55	5.1C	10	5	1	5	130	8	135	69				
56	Franz Pastoral Trust	425	242	56.94	2	82	4C+		5	5	10	8	9	8	5.32	3.1C	10	5	0	4	100	8	56	69				
80	Johannsen, R & K	426	238.2	55.92	1	88	5.5C		5	5	10	8	9	8	5.32	3.1B	10	5	1	5	110	7	80	68.5				
97	Mawhinney, L	404	225.8	55.89	1	78	3.5C+		6	5	10	6	10	8	5.32	3.1C	10	5	1	5	100	5	97	68.5				
57	Franz Pastoral Trust	452	252.6	55.93	1	82	3.5C+		6	7	10	6	10	8	5.41	5.1C	10	5	1	5	130	5	57	68.5				
139	Thompson Brothers	491	270.2	55.93	0	82	2.5C+		5	9	10	7	10	9	5.32	3.1B	10	5	1	5	110	8	139	68.5				
20	Caneron, T	357	201.6	56.47	1	75	4.5C		5	9	10	7	10	9	5.41	5.1C	10	5	0	4	110	5	20	68.5				
108	Mooney, J & P	518	290.8	56.14	1	86	2.5C		5	8	10	7	10	8	5.55	5.1C	10	5	0	4	120	8	108	68.5				
90	Lacey, K & B	403	226.6	56.23	1	88	6C		5	5	10	5	10	8	5.41	5.1C	10	5	0	4	130	4	90	68				
152	Topline Droughmaster (490	252.6	51.55	0	83	4C		5	9	10	5	10	8	5.41	5.2	10	5	0	4	110	4	152	68				
106	Mooney, J & P	502	270.8	53.94	0	73	0.5C+		6	6	10	7	10	8	5.41	5.1C	10	5	1	5	110	8	106	67.5				
154	Valt View Droughmaster	417	225.4	54.05	3	78	3.5C		6	5	10	7	10	8	5.41	5.1C	10	5	1	5	110	6	154	67.5				
62	Goody, E J	428	247	57.71	0	79	3C+		5	5	10	8	10	7	5.65	3.1C	10	5	1	5	110	7	62	67				
119	Pratt, D & H	461	258	55.97	1	97	7C+		6	10	10	6	10	7	5.66	3.1C	10	5	0	4	150	4	119	67				
124	Pratt, D & H	453	255.2	56.34	1	82	3C		5	6	10	5	10	8	5.46	5.1C	10	5	0	4	120	6	124	67				
114	Ophrant, RJ	463	252	54.43	0	83	4C		5	6	10	5	10	8	5.41	5.1B	10	5	0	4	120	6	114	67				

2017 Gympie Carcass Classic

CARCASS MEASUREMENTS

TAG NO	OWNER	WEIGHT MAYNERS KGS	CARCASS WEIGHT KGS	DRESSED WEIGHT %	DRESSING% (MAX 10)	EYE MUSCLE AREA (SQ CM)	EYE SCORE (MAX 10)	MUSCLE SCORE A TO E	MUSCLE POINTS (MAX 10)	FAT DEPTH (MM)	FAT DEPTH (MM)	FAT DEPTH (MM)	FAT DEPTH (MM)	FAT DIST. (MAX 10)	pH SCORE (MAX 5)	pH SCORE (MAX 5)	MEAT COLOUR SCORE (MAX 10)	MEAT COLOUR SCORE (MAX 10)	FAT COLOUR SCORE (MAX 5)	MARBLING SCORE (MAX 5)	MARBLING POINTS (MAX 5)	OSS SCORE	WEIGHT MAYNERS POINTS (MAX 10)	TAG NO	TOTAL POINTS
45	Duncombe, B	411	246.4	59.95	5	83	4B		8	3	5	4	9	6.535	31C	31C	10	10	5	0	4	100	8	45	67
13	Bothams, D	492	265.2	53.9	0	74	0.5C+		6	6	10	4	9	5.532	31C	31C	10	10	5	0	4	110	8	17	66.5
17	Budner Pastoral Compa	427	266.8	62.48	7	101	7.5C+		6	5	5	5	6	5.532	31C	31C	10	10	5	0	4	100	8	52	66.5
52	Fitzgerald Family Trust	418	222.2	53.16	0	76	3.5C		5	8	10	5	10	9.565	32	32	10	10	5	0	4	100	6	157	66.5
157	Watson, S-J	582	310.8	53.4	0	102	5.5C		5	8	10	5	10	7.532	31C	31C	10	10	5	1	5	100	8	48	66.5
48	Fitzgerald Family Trust	443	235.4	53.14	0	76	2.5C		5	12	5	7	10	8.532	31C	31C	10	10	5	1	5	100	6	76	66.5
76	Heath, L	418	228.4	54.64	0	89	6.5B		8	5	10	3	6	8.566	32	32	10	10	5	1	5	160	3	28	66.5
28	Constabley, G & S	426	240.8	56.53	2	76	2.5C		5	5	10	7	10	9.552	32	32	10	10	5	1	5	160	4	78	66.5
78	Jen-Daview Limousin St	446	251.6	56.41	1	86	4.5B		8	6	10	5	10	7.532	31C	31C	10	10	5	0	4	100	4	78	66.5
112	Murgen State High Scho	347	206.6	59.54	5	91	8B		8	3	5	3	6	4.562	51C	51C	10	10	5	1	5	120	6	112	66
140	Thompson Brothers	540	287	53.15	0	76	0C+		6	5	10	7	10	7.541	31C	31C	10	10	5	0	4	150	8	140	66
91	Lacey, K & B	544	309.2	56.84	2	84	1C+		6	5	10	5	10	9.532	31C	31C	10	10	5	0	4	150	6	91	66
21	Cheahne, N & N	480	246.8	51.42	0	77	2.5C+		6	5	10	5	10	8.539	32	32	10	10	5	1	5	150	4	21	65.5
103	Mercer, J & R	479	262.4	54.78	0	84	3.5C+		6	7	10	5	10	7.539	31C	31C	10	10	5	1	5	150	4	103	65.5
14	Bothams, D	422	244.4	57.91	3	79	3.5B		8	5	10	3	6	6.532	32	32	10	10	5	0	4	110	7	14	65.5
87	Kilcoy State High School	406	217.6	53.6	0	73	3C+		5	9	10	5	10	8.532	31B	31B	10	10	5	0	4	100	8	37	65
37	Coller, G & L	444	252	56.76	2	87	5C+		6	3	5	7	10	5.562	32	32	10	10	5	0	4	100	7	87	65
12	Bothams, D	342	204.6	59.82	5	78	5C+		6	5	10	3	6	8.565	32	32	10	10	5	0	4	150	3	12	65
109	Mooney, J & P	450	242.2	53.82	0	73	2C+		6	7	10	5	10	8.532	31C	31C	10	10	5	0	4	110	7	109	65
166	Wyllie, C & M	449	269	59.91	5	107	9B		8	2	0	3	6	4.552	52	52	10	10	5	0	4	100	9	166	65
98	Mawhinney, L	395	241	61.01	6	98	8B		8	1	1	3	6	5.541	51C	51C	10	10	5	0	4	110	9	98	65
122	Pratt, D & H	414	237.8	57.44	2	89	6C+		6	5	10	4	9	6.565	32	32	10	10	5	0	4	140	4	122	65
142	Thompson Brothers	469	257.8	54.97	0	77	2B		8	2	10	4	9	9.532	31C	31C	10	10	5	0	4	100	5	142	65
3	Aisthrop, L & M	342	205.8	60.18	5	85	6.5B		8	2	1	4	9	5.541	31C	31C	10	10	5	0	4	110	6	3	64.5
5	Atkinson, NI	450	244.2	54.27	0	76	2.5C+		6	6	10	5	10	7.565	31C	31C	10	10	5	0	4	110	7	5	64.5
116	Ophant, RJ	516	278.6	53.99	0	84	2.5C+		6	7	10	8	9	7.532	31C	31C	10	10	5	0	4	120	8	116	64.5
86	Kenny, R & D	404	225	55.69	1	68	1.5C+		5	7	10	6	10	9.565	32	32	10	10	5	0	4	120	5	86	64.5
141	Thompson Brothers	466	259.6	55.71	1	76	5.5C+		6	6	10	3	6	7.565	31C	31C	10	10	5	0	4	100	7	141	64.5
50	Fitzgerald Family Trust	384	216.6	56.41	1	84	5.5C+		6	6	10	3	6	8.532	31C	31C	10	10	5	1	4	100	7	50	64.5
22	Cheahne, N & N	590	289.6	52.65	0	87	3C+		6	5	10	3	6	5.547	31B	31B	10	10	5	1	5	110	9	22	64
60	Goody, E J	442	239.4	54.16	0	73	2C		5	5	10	4	9	9.532	31C	31C	10	10	5	1	5	120	6	60	64
136	Seemey, M	402	226.6	56.37	1	71	2C+		6	5	10	4	9	6.541	31C	31C	10	10	5	0	4	130	7	136	64
121	Pratt, D & H	518	303.4	58.57	4	97	5B		8	2	1	4	9	8.565	32	32	10	10	5	0	4	120	5	83	64
83	Kenny, R & D	403	220.6	54.74	0	81	5C		5	5	10	4	9	8.565	32	32	10	10	5	0	4	100	5	83	64
146	Thompson, B & L	397	219	55.16	0	75	3.5C		5	5	10	3	6	8.562	52	52	10	10	5	0	4	100	7	146	63.5
156	Vale View Droughmaste	483	261	54.04	0	91	5.5C		5	5	10	6	10	8.566	53	53	10	10	5	0	4	130	6	156	63.5
110	Mooney, J & P	463	261.4	56.46	1	76	1.5C-		4	6	10	6	10	8.541	51C	51C	10	10	5	1	5	160	4	110	63.5
137	Seemey, M	399	220.4	55.24	0	71	2.5C		5	5	10	4	9	7.545	51C	51C	10	10	5	0	4	110	6	137	63.5
7	Black, R & J	441	242.8	55.06	0	67	0.5C+		6	5	10	4	9	8.532	31C	31C	10	10	5	1	5	110	7	7	63.5
151	Topline Droughmaster	485	263	54.23	0	84	3.5C		5	5	10	5	10	8.532	31C	31C	10	10	5	0	4	150	5	151	63.5
51	Fitzgerald Family Trust	429	228.2	53.19	0	64	0C+		6	6	10	8	9	9.532	31C	31C	10	10	5	1	5	110	6	51	63
11	Bothams, D	466	258	55.36	0	82	1C+		5	5	10	4	9	7.532	31C	31C	10	10	5	1	1	130	6	11	63
173	Thompson, B & L	469	248.5	53.01	0	72	0C+		6	8	10	5	10	9.532	31C	31C	10	10	5	0	4	110	7	173	63
85	Kenny, R & D	457	249.8	54.66	0	62	0C+		6	9	10	5	10	8.532	31C	31C	10	10	5	0	4	150	4	85	63
81	Kaddatz, B	444	244.6	55.09	0	73	2C+		5	5	10	5	10	5.532	31C	31C	10	10	5	1	5	100	4	81	63
33	Cocoranga Charolais (Be	424	236	55.66	3	71	1.5C		6	5	10	6	10	7.551	51C	51C	10	10	5	0	4	140	4	33	62.5
23	Cornisley, G & S	409	237.8	58.14	1	68	0.5C		5	7	10	5	10	8.532	31C	31C	10	10	5	1	4	150	4	23	62.5
36	Colter, G & L	418	242.2	57.94	3	75	2.5C+		6	3	5	7	10	7.532	31C	31C	10	10	5	1	5	120	6	36	62.5
143	Thompson Brothers	449	241.4	53.76	0	79	3.5C		5	6	10	5	10	7.532	31C	31C	10	10	5	1	5	150	4	143	62.5
61	Goody, E J	422	227.4	53.89	0	81	4.5C		5	7	10	4	9	8.565	31C	31C	10	10	5	0	4	140	4	61	62.5
161	Watson, S-J	566	309.4	54.66	0	78	0C		5	5	10	5	10	7.532	32	32	10	10	5	1	1	140	7	161	62
160	Watson, S-J	554	317.2	57.28	2	101	5C+		6	6	10	14	0	7.545	51C	51C	10	10	5	1	5	140	7	160	62
148	Thompson, D	415	222.4	53.59	0	74	3C+		6	8	10	3	6	8.532	31C	31C	10	10	5	1	5	110	6	148	62
71	Gyanda Pastoral Co	372	202.6	54.46	0	62	1C		5	12	10	8	9	8.541	51C	51C	10	10	5	0	4	110	5	71	62

2017 Gympie Carcass Classic

CARCASS MEASUREMENTS

TAG NO	OWNER	WEIGHT AT 82 GMS HGS	CARCASS DRESSED WEIGHT	DRESSING %	DRESSING POINTS (MAX 10)	EYE MUSCLE AREA (SQ CM)	EYE MUSCLE SCORE (MAX 10)	MUSCLE SCORE A TO E	MUSCLE SCORE POINTS (MAX 10)	FAT DEPTH (MM)	FAT DEPTH POINTS (MAX 10)	FAT DEPTH (MM)	FAT DEPTH POINTS (MAX 10)	FAT DIST.	pH	pH SCORE (MAX 5)	MEAT COLOUR SCORE	MEAT COLOUR POINTS (MAX 10)	FAT COLOUR TEXTURE (MAX 5)	MARBLING SCORE	MARBLING POINTS (MAX 5)	GSS SCORE	WEIGHT FOR AGE MATURITY (MAX 10)	TAG NO	TOTAL POINTS	
34	Couranga Charolais (Be	382	210.2	55.03	0	83	6C		5	6	10	10	9	6	5.41	51C	10	5	5	1	5	150	2	34	62	
149	Topline Droughthaster (472	257.6	54.58	0	76	1.5C		5	12	10	10	10	6	5.41	51B	10	5	5	1	5	110	7	149	61.5	
59	Goody, E J	430	229	53.26	0	65	0.5C		5	5	10	10	10	5	5.41	51C	10	10	5	0	4	110	6	59	61.5	
100	Mercer, J & R	484	275	56.82	2	96	5.5B+		9	2	1	3	3	6	5.65	3.2	10	10	5	0	4	100	10	100	61.5	
107	Mooney, J & P	449	250.8	55.66	1	73	1.5C+		6	5	10	10	4	9	6.56	3.2	10	5	0	0	4	120	6	107	61.5	
24	Comiskey, G & S	463	240	51.84	0	75	2.5C		5	5	10	10	9	8	5.41	51C	10	10	5	0	4	170	3	24	61.5	
9	Black, R & J	411	216.2	52.6	0	65	1C		5	6	10	10	6	7	5.31	31C	10	10	5	0	4	110	6	9	61	
170	Zerner, R & R	449	265.8	59.2	4	103	8B+		9	2	1	3	3	4	5.32	3.2	10	10	5	0	4	120	7	170	61	
174	Thompson Brothers	474	254	53.59	0	84	4C		5	8	10	10	5	7	5.65	3.2	10	10	5	0	4	170	3	174	61	
53	Fitzgerald Family Trust	389	214.6	55.17	0	78	4.5C		5	12	10	10	11	7	5.41	51C	10	10	5	1	5	100	6	53	60.5	
126	Pratt, D & H	432	259	59.56	5	96	6.5B-		7	2	1	2	2	5	5.52	5.2	10	10	5	0	4	100	9	126	60.5	
72	Gyanda Pastoral Co	449	241	53.67	0	71	1.5C+		6	9	10	10	9	8	5.35	31C	10	10	5	0	4	150	4	72	60.5	
172	Zerner, R & R	373	226.2	60.64	6	92	7B		8	2	1	4	9	6	5.65	3.3	5	5	0	0	4	100	7	172	60	
30	Comiskey, G & S	464	246.6	52.93	0	63	0C		5	9	10	10	7	7	5.62	5.2	10	10	5	0	4	150	4	30	60	
82	Kenny, R & D	430	224.8	52.28	0	61	0C		5	8	10	10	4	9	8	5.62	51C	10	10	5	0	4	140	4	82	60
113	Offord, J	495	270.2	54.59	0	64	0C		5	10	10	10	6	7	5.65	31C	10	10	5	1	5	140	5	113	60	
74	Gyanda Pastoral Co	498	249.2	50.04	0	76	2C		5	8	10	10	5	7	5.32	31C	10	10	5	0	4	150	4	74	60	
69	Gyanda Pastoral Co	471	240.4	51.04	0	63	0C		5	10	10	10	6	8	5.35	31C	10	10	5	0	4	150	4	69	59	
127	Pratt, L	489	265	54.19	0	78	2C+		6	9	10	10	11	6	5.41	51B	10	10	5	1	5	120	7	127	59	
138	Semlin, M	451	243	53.88	0	73	2C+		6	12	10	10	3	7	5.32	31C	10	10	5	0	4	120	6	138	59	
101	Mercer, J & R	480	260.2	54.21	0	104	8.5C		6	6	10	10	6	5	5.52	51C	10	10	5	0	4	140	4	101	58.5	
1	A Templeton & Son	445	231	51.91	0	78	3.5C+		6	14	10	10	3	7	5.52	51C	10	10	5	0	4	110	6	1	58.5	
111	Mooney, J & P	446	231	51.79	0	73	2.5C		5	7	10	10	10	6	9	5.35	31C	10	10	5	0	4	140	4	111	58.5
145	Thompson, B & L	411	229.8	55.91	1	76	3C		5	3	5	10	5	5	5.32	3.2	10	10	5	0	4	140	4	145	58	
96	Lacey, K & B	487	277.8	57.04	2	75	0.5C		5	5	10	10	3	6	6.55	31C	10	10	5	0	4	130	6	96	57.5	
120	Pratt, D & H	408	243.2	59.61	5	74	3.5B		8	5	10	10	3	6	7	5.44	5.2	10	10	5	0	4	120	8	120	57.5
29	Comiskey, G & S	392	207.2	52.86	0	79	3.5C		5	5	10	10	6	6	5.32	31C	10	10	5	0	4	100	6	29	57.5	
116	Orphan, RJ	500	255.6	51.12	0	71	0.5C		5	14	10	10	9	8	8	5.32	31C	10	10	5	1	130	6	116	56.5	
27	Comiskey, G & S	387	217.2	56.12	1	72	2.5C+		6	5	10	10	3	6	6	5.52	5.2	10	10	5	0	4	190	1	27	56.5
73	Gyanda Pastoral Co	386	212.8	55.13	0	69	2.5C		6	13	10	10	6	6	6	5.32	31C	10	10	5	1	130	3	73	56.5	
32	Comiskey, G & S	428	230.2	53.79	0	66	0.5C+		6	6	10	10	10	6	8	5.32	31C	10	10	5	1	160	3	32	56.5	
41	Crossley, J & R	514	276.2	53.74	0	92	4.5C+		6	16	2	6	10	4	5.5	51B	10	10	5	1	5	150	5	41	56.5	
164	Wylie, C & M	394	241.2	61.22	6	87	5.5B		8	1	0	2	3	3	5.41	51C	10	10	5	0	4	120	6	164	55.5	
31	Comiskey, G & S	470	256.6	54.6	0	79	2.5C		5	5	10	10	3	6	6	5.35	31C	10	10	5	0	4	160	4	31	55.5
94	Lacey, K & B	448	244.2	54.51	0	69	1C		5	9	10	10	9	8	6	5.35	3.2	10	10	5	0	4	160	3	94	55
159	Watson, S-J	538	296.4	55.09	0	86	2C		5	10	12	1	1	7	5.32	31C	10	10	5	1	5	130	7	159	55	
2	A Templeton & Son	470	255	54.26	0	73	1C		5	5	10	10	12	1	8	5.35	31C	10	10	5	1	130	6	2	54	
46	Durcombe, B	361	205.8	57.01	2	76	4C		5	2	1	4	9	5	5.52	5.2	10	10	5	0	4	140	3	46	53	
163	Wylie, C & M	429	249.4	58.14	3	83	4B+		9	1	0	2	3	3	5.32	31C	10	10	5	0	4	110	7	163	51	
65	Gympie State High Scho	356	197.6	55.51	1	63	3C+		6	5	10	10	5	5	5.41	5.2	10	10	5	0	4	100	6	65	50	
167	Wylie, C & M	370	218.2	58.97	4	58	0C		5	2	1	4	9	5	5.65	3.2	10	10	5	0	4	130	4	167	50	
89	Kinraoy State High Sch	354	191.4	54.07	0	71	4C		5	7	10	10	6	6	8	5.65	3.2	10	10	5	0	4	110	4	89	48
66	Gyanda Pastoral Co	362	190.6	52.65	0	57	0.5C		5	7	10	10	7	10	6	5.41	51C	10	10	5	0	4	110	4	66	46.5
70	Gyanda Pastoral Co	363	197.6	54.44	0	72	3.5C		5	6	10	10	3	6	9	5.65	3.2	10	10	5	0	4	110	5	70	45.5
28	Comiskey, G & S	388	216.8	55.88	1	57	0C		5	2	1	3	6	6	6	5.65	3.2	10	10	5	0	4	180	2	28	43
40	Crossley, J & R	484	262	54.13	0	78	2C		5	19	0	11	3	3	5.41	51C	10	10	5	0	4	180	3	40	43	
67	Gyanda Pastoral Co	330	168.4	51.03	0	53	0.5C		5	8	10	10	10	3	7	5.65	3.2	10	10	5	0	4	110	3	67	42.5
128	Pratt, L	358	207	57.82	3	87	7C+		6	2	1	2	3	4	5.39	0.4	10	10	5	0	4	130	4	128	37	
68	Gyanda Pastoral Co	283	146.6	51.8	0	53	1.5C		5	3	1	5	3	3	5.32	31C	10	10	5	0	4	100	2	68	35.5	
75	Gyanda Pastoral Co	314	173	55.1	0	64	3C		5	1	3	3	6	6	5.32	31C	10	10	5	0	4	100	4	75	29	
147	Thompson, B & L	342	177.4	51.87	0	62	2C		5	5	10	10	2	3	8	5.78	0.4	10	10	5	0	4	100	5	147	27
133	Ross, C & H	612	329.6	53.86	0	79	C		5	17	1	10	10	7	5.41	51B	10	10	5	1	5	150	7	133	27	
162	Watson, S-J	638	328.6	51.5	0	92	C		5	8	10	10	8	9	5.41	51C	10	10	5	1	5	160	6	162	27	

2017 Gympie Carcass Classic

CARCASS MEASUREMENTS

TAG NO	OWNER	WEIGHT AT DRESSING	CARCASS DRESSED WEIGHT	DRESSED WEIGHT %	DRESSING % POINTS (MAX. 10)	EYE MUSCLE (SQ CM)	EYE MUSCLE (MAX. 10)	MUSCLE SCORE A-10-E (MAX. 10)	MUSCLE SCORE (MAX. 10)	FAT DEPTH (MM)	FAT DEPTH POINTS (MAX. 10)	FAT DEPTH (MM)	FAT DEPTH POINTS (MAX. 10)	FAT DEPTH (MAX. 10)	FAT DIST (MAX. 10)	pH	pH SCORE (MAX. 5)	MEAT COLOUR SCORE	MEAT COLOUR POINTS (MAX. 10)	FAT COLOUR TEXTURE (MAX. 5)	MARBLING SCORE	MARBLING POINTS (MAX. 5)	OSS SCORE	WEIGHT FOR AGE MATURITY (MAX. 10)	TAG NO	TOTAL POINTS
AVERAGE		442.3802	246.7267	55.87006	1.590062	81	3.625786		6.093168	6.236028	8.546584	5.484472	8.409938	7.080745	5.44	3.857143		9.813565	5	0.316770	4.316770	123.1056	6.024845		63.65981	